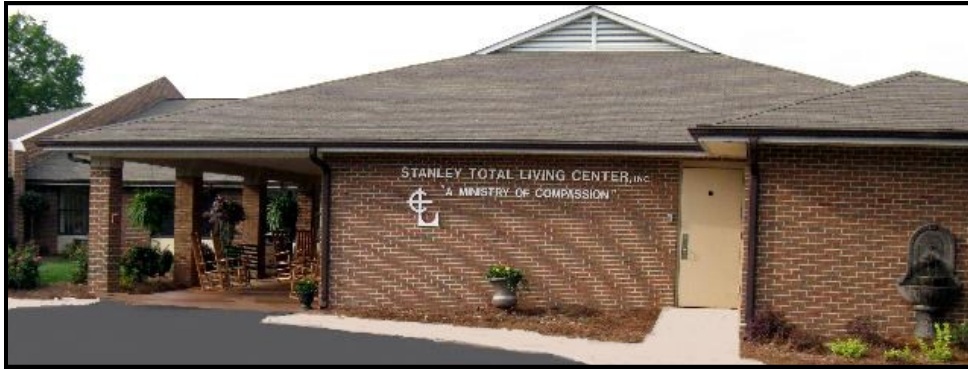
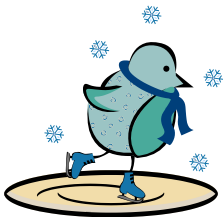


STLC Caring Times

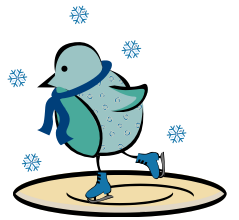
"A Ministry
of Compassion"



January 2012
Issue
Created by
Jennifer Benton



Stanley Total Living Center
514 Old Mt. Holly Road Stanley NC 28164
704-263-1986
Website: www.stanleytotallivingcenter.org



Helping Our Community

Our annual can food drive will kickoff the new year on New Year's Day and run until Superbowl Sunday. This is the third year for the drive and we are looking to surpass our record of 4,074 cans collected last year. Collection boxes are located around the facility. Bring a few cans for your loved ones to donate when you come to visit. All food collected supports local food ministries in our community.



Thank You Santa!



Thank you Santa for making our day merry and bright. Copies of Santa pictures can be emailed to you by request. Send requests to:

Attention: Santa Pics

JBenton@stanleytotallivingcenter.org

Celebrating Christmas



With grateful appreciation

Thank you to all of the helping hands that made the holidays so memorable. From the decorations, to the gifts, to singing carols around the building...You make the difference in the lives of our residents!

Notes of Appreciation

Dear nurses, CNAs, therapists, housekeepers, activities and other support staff,

Thank you all for everything you've done to help in my husband's recuperation from the tractor accident. You all have truly been "angels of mercy" to both of us. He is **walking** now, slowly but surely, and looks forward to the day he can walk back into Stanley Total Living Center to say Hello! We are so grateful for all the kindness you showed to us during what could have been a difficult time. Instead, you showed us love, compassion, and very efficient care! We thank God for **ALL** of you! Blessings,
The Lineberger family



Spotlight on Activities

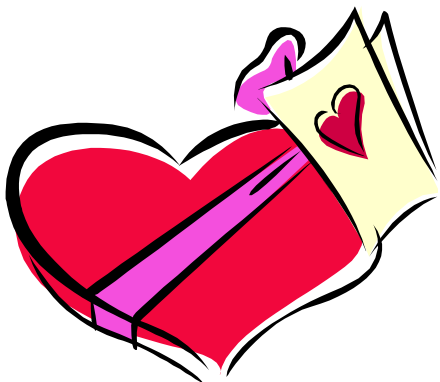
Thursday, Jan. 11th: Hot tea taste test
Friday, Jan. 12th: Tony Corners in concert
Monday, Jan. 16th: Womens social
Tuesday, Jan 17th: "Let's make a deal" game
Wednesday, Jan.18th: Winter bracelets
Friday, Jan. 20th: Outing to Our Paintin' Place
Monday, Jan 23rd: Elvis classic with Brian McMearn

Happy Birthday to...

Ruby Black	January 4th
Clyde Dellinger	January 9th
Edith Fraley	January 12th
Janet Lewis	January 14th
Marcelo Banda	January 16th
Burzell Price	January 19th
Mable Flowers	January 19th
Gladys Hardman	January 26th
Helen Barker	January 27th



Cupid is in the building!



Activity Department Fundraiser
Send your loved one a special Valentine this year!

What's included: Small box of chocolates with card attached

Delivered directly to them: Tuesday, February 14th after lunch

Donation: Only \$5.00 per valentine
We will be accepting orders starting January 16th.

With Sympathy



Mary Howlett
Billy Rhynehardt
Hope Withers

Memorial Service
Friday, January 27th 2012

2:30p.m.

100 Unit Activity Room.
Family and Friends are encouraged to attend.



Reminder: Get it labeled & Clean it out!

Don't forget to have your loved ones new clothes labeled with their name if you allow the facility to do their laundry. This is a free service offered to you. Just bring the items to the laundry room near the 500 unit nurses' desk and ask for this service. This assists us in making sure no items are "lost" in the shuffle of being laundered.

While visiting with your loved one, please take this opportunity to help "clean out" closets due the space limitations. Remove all clutter from closets, nightstands, and windowsills. Bring non-breakable items for your loved ones to enjoy.